

**Nokia Customer Care
RH-47 Series Cellular Phones**

**5 - Disassembly & Assembly
Instructions**

[This page intentionally blank]

Table of Contents

| | Page No |
|--------------------------------|----------------|
| Disassembly | 4 |
| Required tools | 5 |
| Disassembly instructions | 5 |
| Assembly | 13 |
| Required tools | 13 |
| Assembly instructions | 14 |

[This page intentionally blank]

Disassembly

Required tools

- SRT-6 opening tool
- Tweezer (ESD compliant)
- Torx T6 screwdriver (ESD compliant)
- Gloves
- SS-33 A-cover opening tool (recommended)

Figure 1: Required tools for disassembly

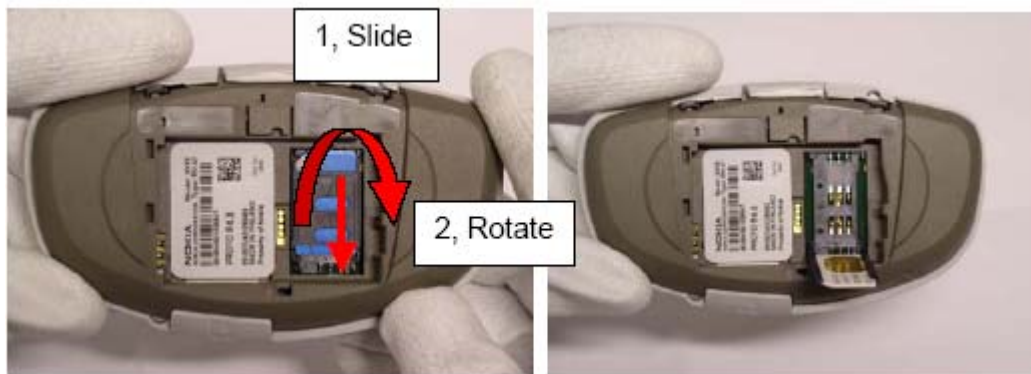


Disassembly instructions

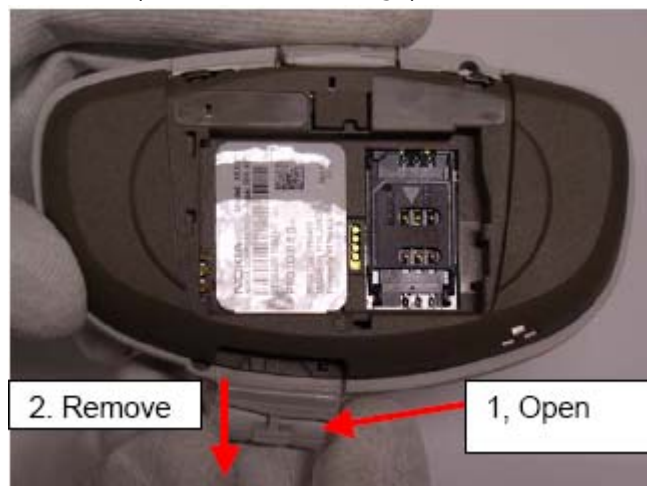
1. To remove the battery cover, press the battery cover release button (1) and remove the cover by sliding it towards the connectors (2). Remove the battery (there is no locking).



2. To remove the SIM card, slide (1) the SIM card holder downwards. Then rotate the holder (2) to open the SIM-connector latch and remove the SIM card.

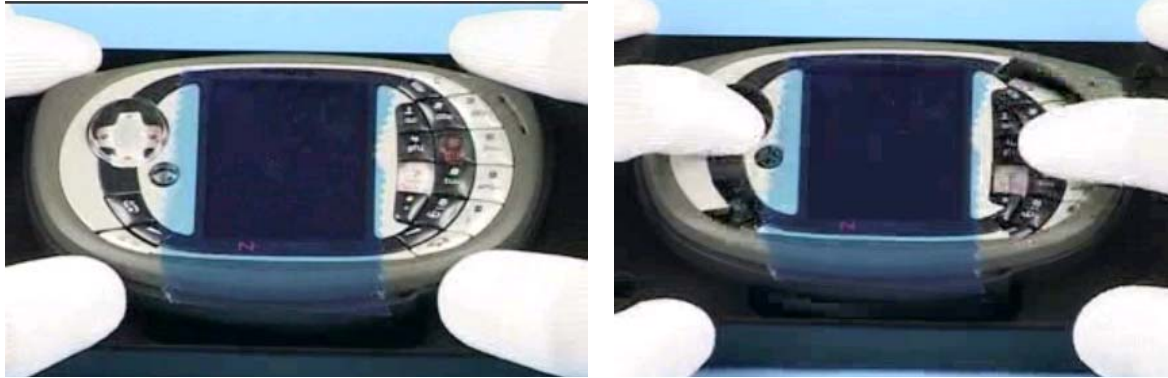


3. To remove the MMC card, open (1) the MMC lid in grip and remove (2) the card.



4. Place the device onto an SS-33 opening tool. To remove the A-cover, grip and keymat, push the keymat from the rocker and T9 area with the thumbs. Keep pushing and at the same time help with index fingers from the left and right outer edges of the device.

Remove the A-cover and grip. Remove keymats (there is no locking).



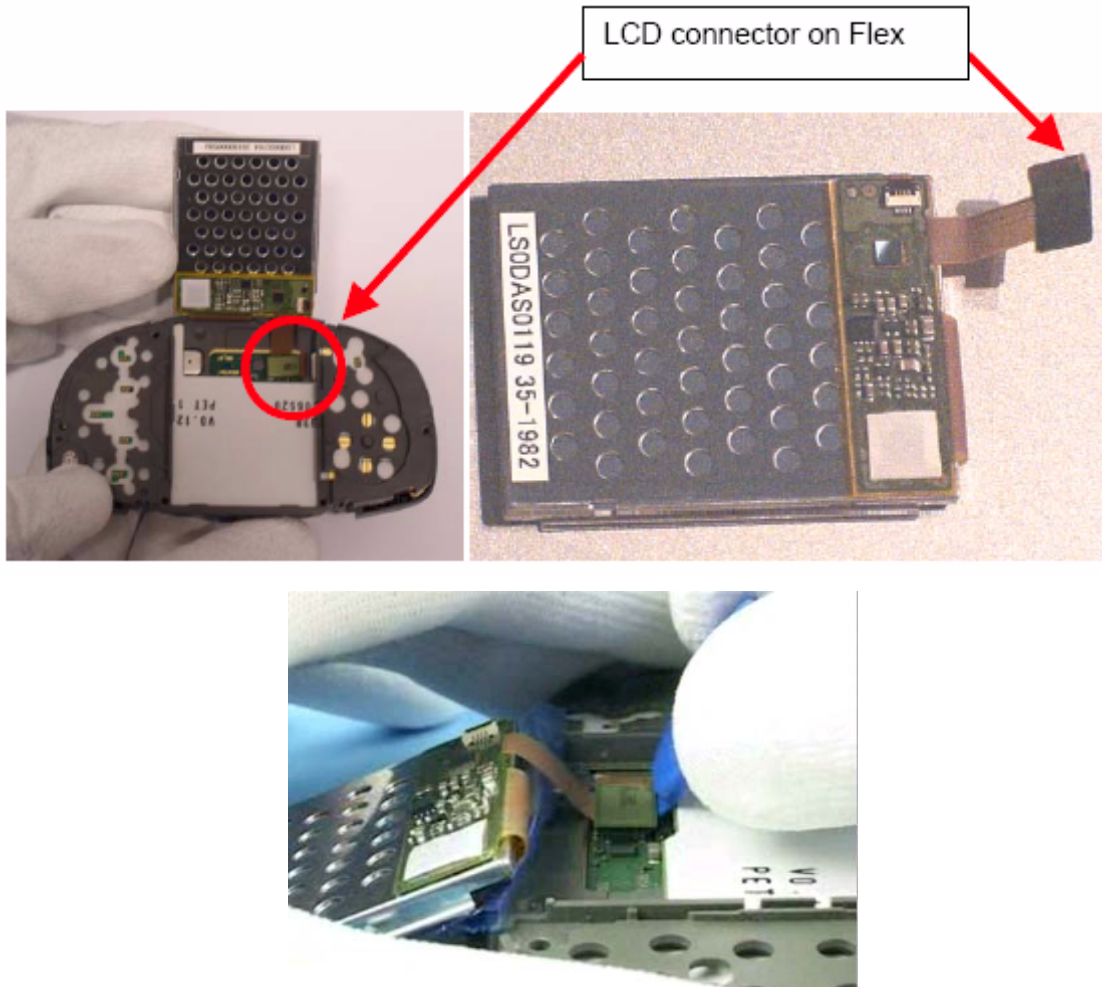
5. To remove the LCD shield, remove screws (6 pcs) by using Torx T6 screwdriver. Remove the LCD shield carefully. *Note for reassembly.* When reassembling use 27 Ncm torque for the screws. The order for tightening the screws in reassembly is showed in the reassembly section.



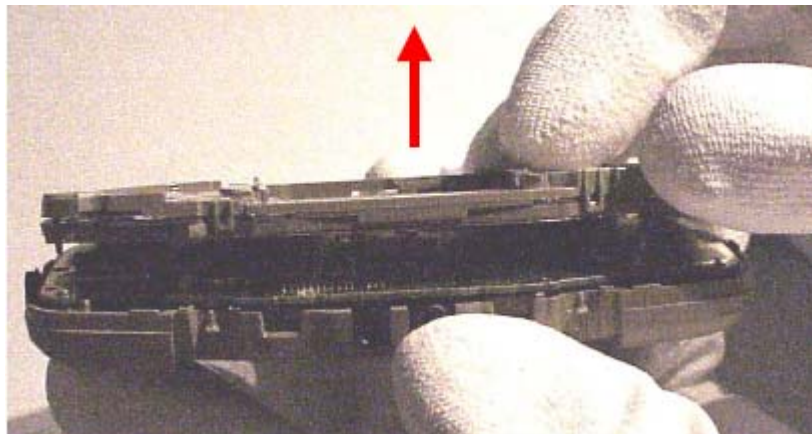
6. To remove the LCD module, carefully lift (it is not locked to keyguide) it from the upper edge. Tilt the LCD module 180 degrees. Support the LCD module to avoid damaging the module, connectors or flex because LCD connector is still connected.



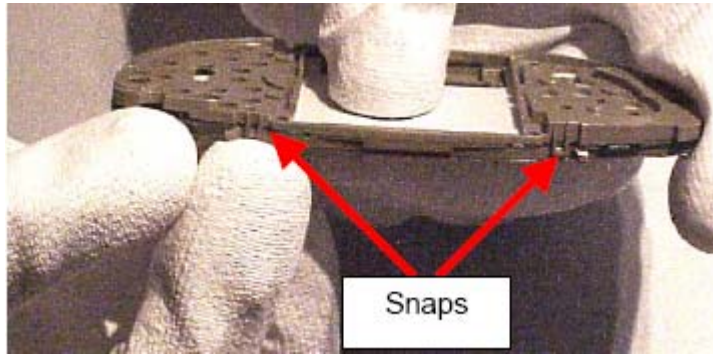
7. Use a special opening tool SRT-6 to unplug the LCD connector.



8. To remove the keyguide assembly, simply lift it (it is not locked).



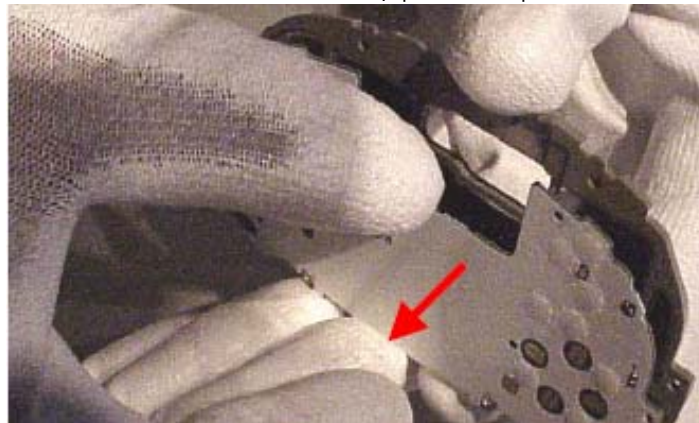
9. Unclip the snaps (2 pcs) on top of the keyguide with a fingernail or a tool and remove parts. Be careful not to break the snap feature in keyguide.



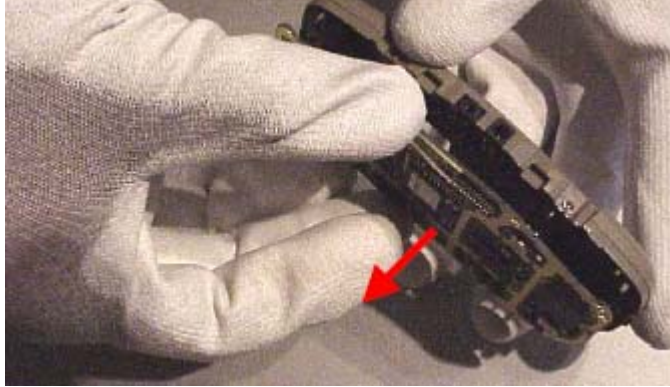
10. To remove the earpiece from keyguide push the component on top side of the keyguide.



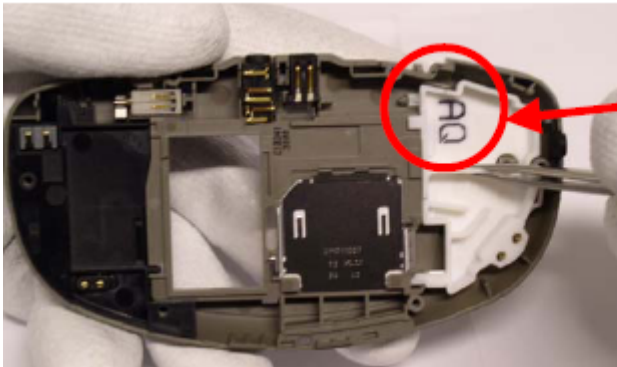
11. To remove UI PWB from the center frame assembly, pull them apart.



12. To remove the engine PWB, simply lift it out from the B-cover.



13. Use tweezers or fingers to remove the antenna assembly.



Antenna marking:
BLACK AQ

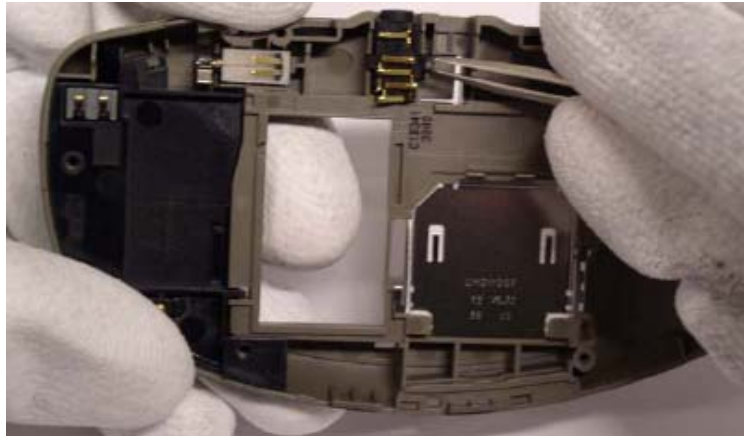
14. Use tweezers to remove the power switch actuator.



15. Use fingers or tweezers to remove the DC-jack.



16. Use fingers or tweezers to remove the line-ins.



17. Use tweezers to remove the vibra.



18. Use fingers to remove the IHF-lid.



19. To remove the HF/Malt speaker, use SRT-6 to carefully lift it up. Use tweezers to remove it. Be careful because there are thin wires on the speaker that can be easily damaged.



Note for Reassembly. The HF/Malt speaker is fixed with a double-sided adhesive. Use a new adhesive when re-assembling.

Assembly

Required tools

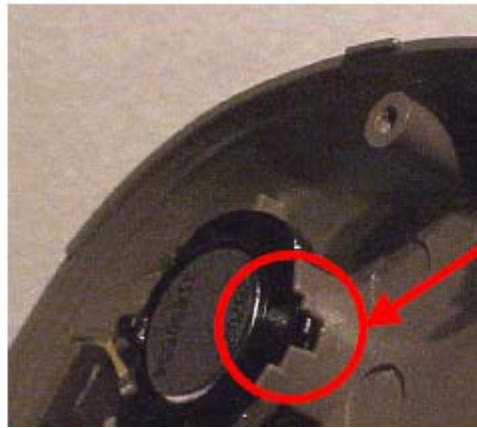
- SRT-6 opening tool
- Tweezer (ESD compliant)
- Dynamometric Torx T6 screwdriver (ESD compliant), 28-30 Ncm
- Torx T6 screwdriver
- Gloves

Figure 2: Required tools for assembly



Assembly instructions

1. Use tweezers to reassemble the Malt Speaker. Use the 2 holes on top of the speaker to avoid damaging the speaker. There are thin wires that can be easily damaged. The Malt speaker is fixed with a double-sided adhesive. Use a new adhesive when reassembling. Note the correct assembly position. There is a nose in the speaker and a recess in the B-cover. The nose should go into the recess.



Nose and recess

2. Use tweezers or fingers to reassemble the IHF-lid assembly.



3. Use tweezers to reassemble the vibra, avoid damaging the connectors.



4. Use tweezers to reassemble the line-in connector, avoid damaging the connectors.



5. Use tweezers or fingers to reassemble the DC-jack, avoid damaging the connectors.

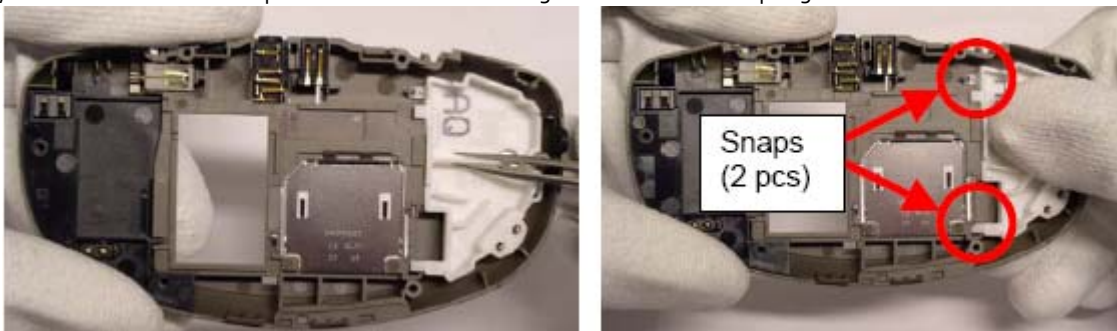


6. Use tweezers to reassemble the power switch actuator. Power switch actuator is placed on a slot inside the B-cover.

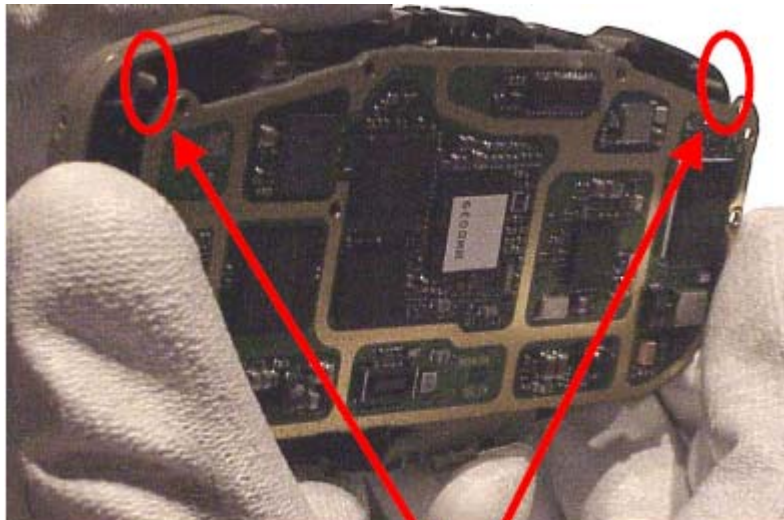
Note! Make sure power switch actuator is pressed down as far as it goes. Otherwise it can be lost.



7. Use first tweezers to assemble the antenna-assembly to the B-cover assembly. Then press the antenna-assembly down to fix the two snaps. Be careful not to damage antenna contact springs.



8. To reassemble the engine PWB, simply place it on the B-cover. Make sure that the battery connector springs go through the hole and that the PWB is lying flat on the B-cover assembly.



Guiding pins in B-Cover for the Engine PWB

9. Use tweezers to reassemble the earpiece. Be careful not to bend the connectors or damage the wirings.

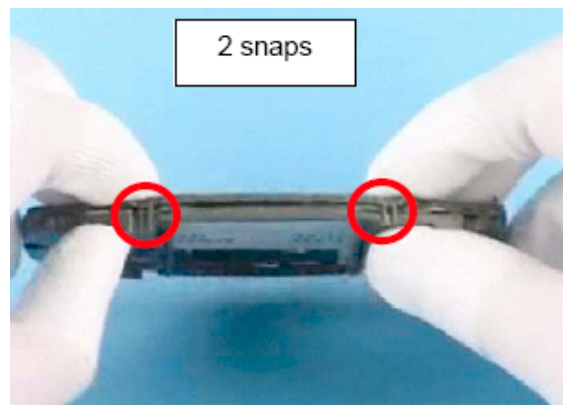
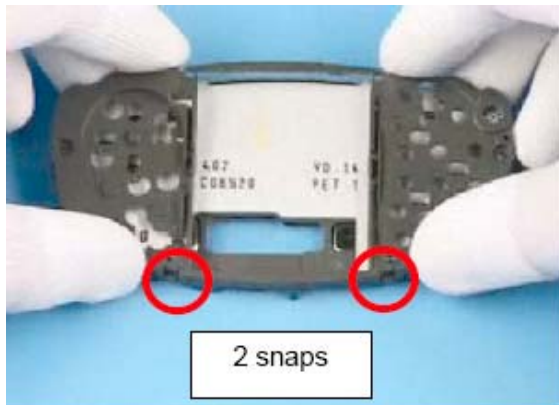


10. Place UI PWB on top of the center frame assembly. Use guiding pins in center frame and holes in UI PWB for location.

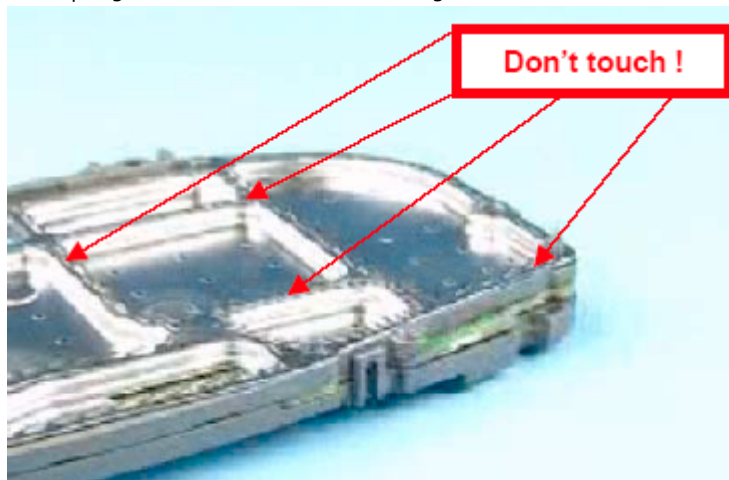


Guiding Pins

11. Hold the keyguide upside down and place the UI PWB and center frame assembly on the keyguide. Locate bottom edge snaps. Then press so that the upper edge snaps lock.



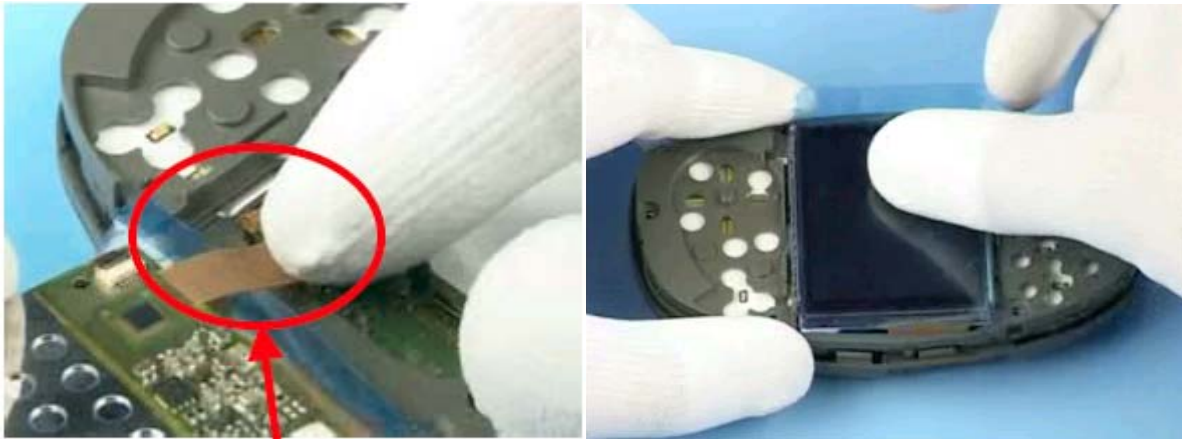
Never touch the metal springs of the center frame with fingers or tools.



12. Place the keyguide assembly on the engine PWB.



13. Turn the LCD module upside down and connect the LCD connector (on flex). Tilt the LCD module 180 degrees and place the LCD module to keyguide opening.



Place and press

14. Place the LCD shield carefully on the LCD module. Check LCD shield orientation.

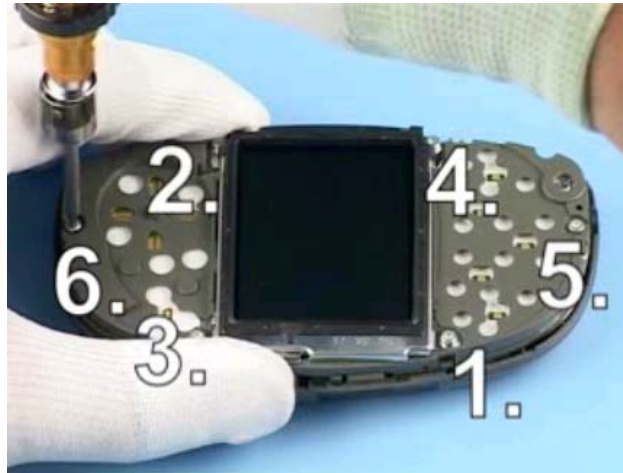


Be careful not to damage the display frame and check that it fits completely without any mechanical stress.

15. Reassemble the screws in the following order using a dynamometric Torx T6 screwdriver.

Note: Use 28 - 30 Ncm torque for the screws!

Follow the exact order shown in the picture!



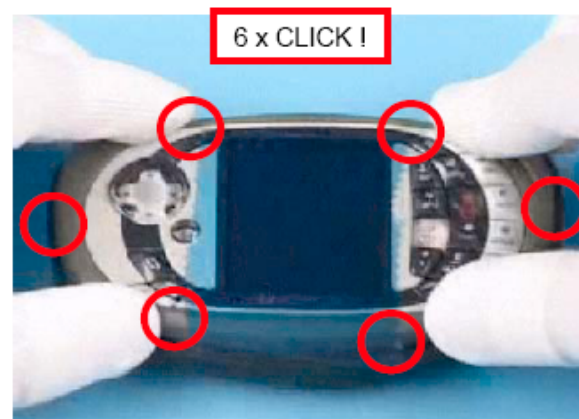
16. To reassemble the grip, place it on the A-cover.



17. Place the keypad on the engine assembly.

To fit the A-cover to the engine assembly, press directly downwards.

Note! Make sure that all snaps locked correctly.



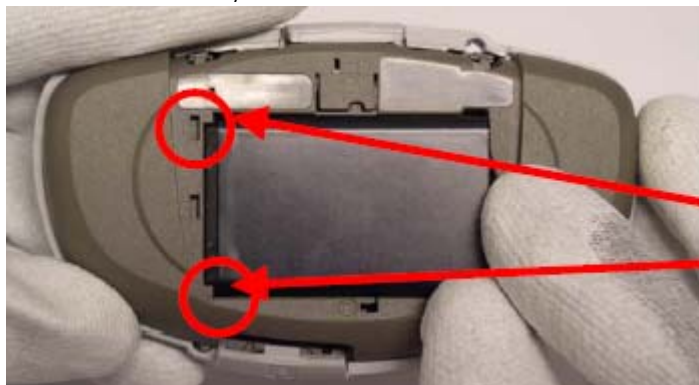
18. Reassemble the SIM card into the SIM card connector latch. To close the latch, rotate and slide the SIM card holder upwards to lock it.



19. To reassemble the MMC card, open the lid in grip and place the card into the slot located in the B-cover.



20. Reassemble the battery



Place & slide battery end under pins in B-Cover.
Push Battery into the Battery slot.

21. Slide the battery cover in place.



[This page intentionally blank]